



AFATDS' EFFECTS MANAGEMENT TOOL

Mr. Andrew Liang

PM, Intelligence & Effects

Ft Monmouth, NJ

(732) 427-3369; DSN 987

andrew.liang@c3smail.monmouth.army.mil



Introduction to EMT



Effects Management Tools

File Fire Support Map Options Help

78091.0

ASLs (All)

Friendly Geometries (Status)

Active

- 1BDE ZOR
- 2 BDE
- 23CVD ZOR
- 2BDE ZOR
- 3 BDE
- 3ACR ZOR
- 3BDE ZOR
- ACA
- ALPHA
- BIKELAKE
- CFL1
- CFL9
- CHARLIE
- CHEM1
- CLOSE BA
- DEEP BA
- DSA
- LLL
- LOPKIOLK
- PAR
- QAD
- REAR BA
- TFFLOT
- ZOR1
- ZOR2

Inactive

- AC1
- AC3
- GDFDJ
- JADE

Friendly Units (Type)

- Air
- Aviation
- Cannon
- Mortar
- Observer
- Other
- Radar

CBR 95 B 99TAB 23CVD

- CBR 96 B 99TAB 23CVD
- CMR 97 B 99TAB 23CVD
- CMR 98 B 99TAB 23CVD
- CMR 99 B 99TAB 23CVD
- CBR 99 RADAR PKG11

Rocket

- Hostile Geometries (All)
- Hostile Units (All)
- Targets (Category & Type)

ADA

- ADA,Hvy (+99mm)
- AA0000 - 15 131ZZ

Receiving data from AFATDS

Connection: mjwoit connected to A99+ server ray015

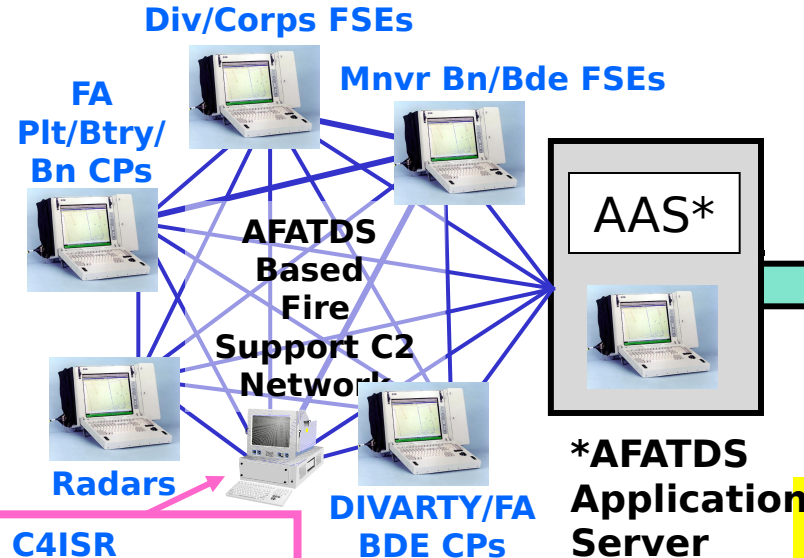
5 51186 038 96724 11 26 1830Z AUG 02

Classification: Unclassified

- Promotes network-centric Fire Support
- Extends AFATDS' fires & effects capabilities and SA across networks to tactical and strategic staff and duty cells remote from the tactical AFATDS workstations.



EMT Is a Client to AFATDS

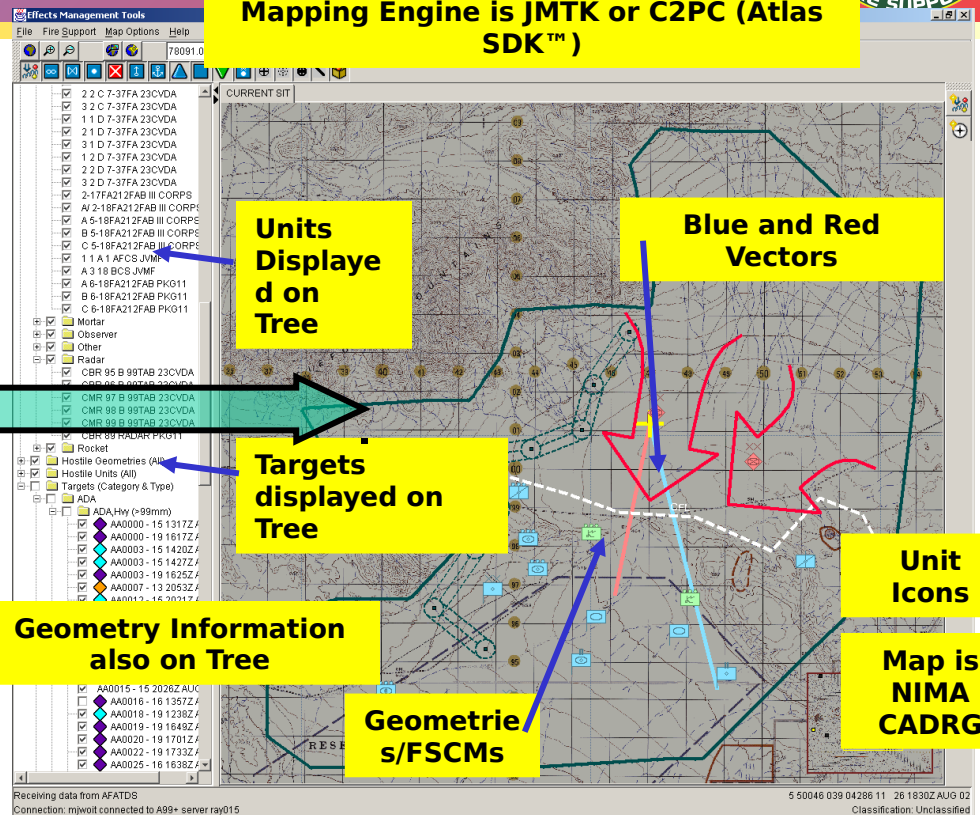


C4ISR Systems

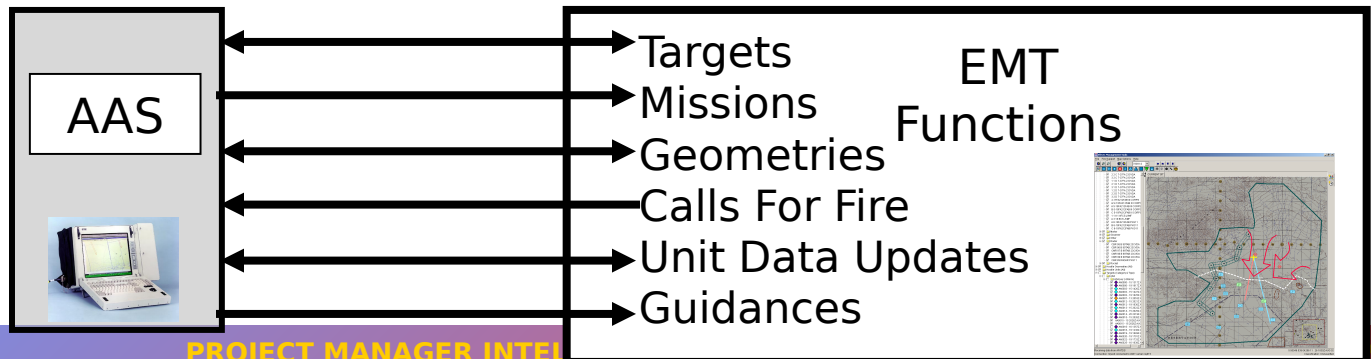
- TBMCS
- GCCS-M
- JSTARS-CGM
- ABCS

- ASAS
- MCS
- FBCB2
- TAIS
- GCCS-A
- NATO FS

- NFN
- JTT



Information flow between AAS and EMT





General EMT Capabilities



- Display of all AFATDS-known information about units, targets, & geometries on background map, in “tree” format, in windows and tabularly in reports.

- Drill Down Status (Units, Targets, Geometries)

- Display Friendly/Enemy Fires

- Create/update/delete battlefield geometries

- CGRS / Kill Boxes

- Update unit information

- Initiate Calls For Fire

- EMT Situation Monitor

- Use AFATDS Target Types and User-Mapped Expanded Target Types (T-72 vs Tank:Heavy)

- Threat Range Ring & Composite Range Fan Visualization

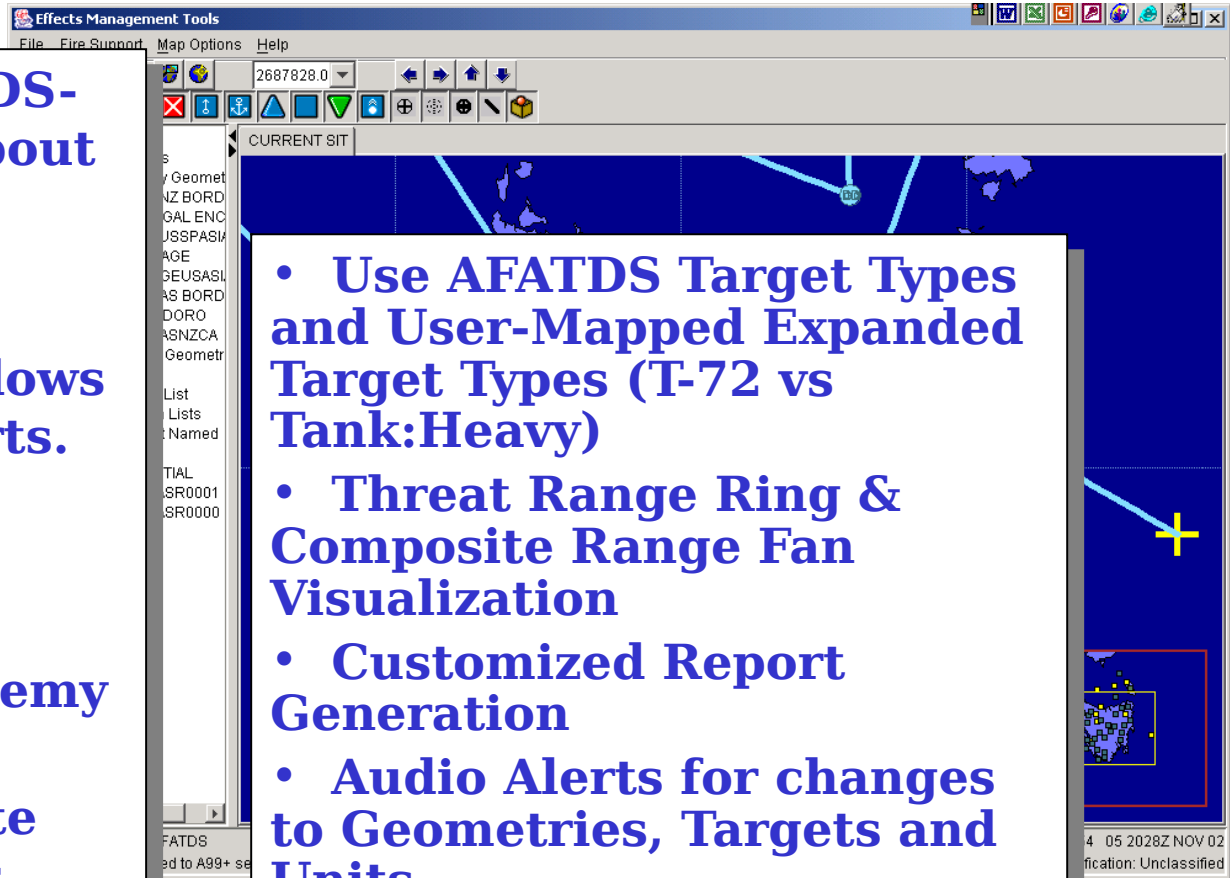
- Customized Report Generation

- Audio Alerts for changes to Geometries, Targets and Units

- J-SEAD Planning

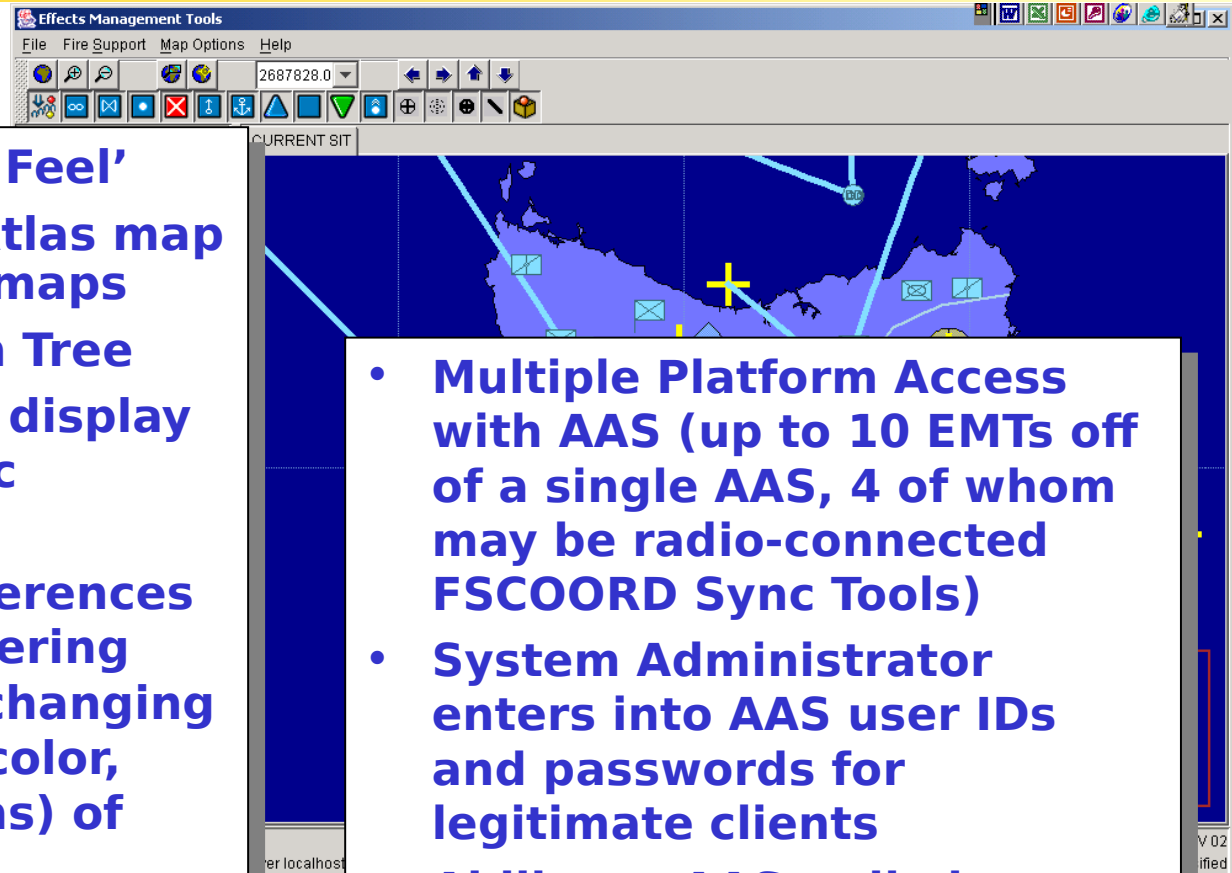
- Terrain analysis & profiling

- Check fire missions against friendly unit & no





General EMT Features

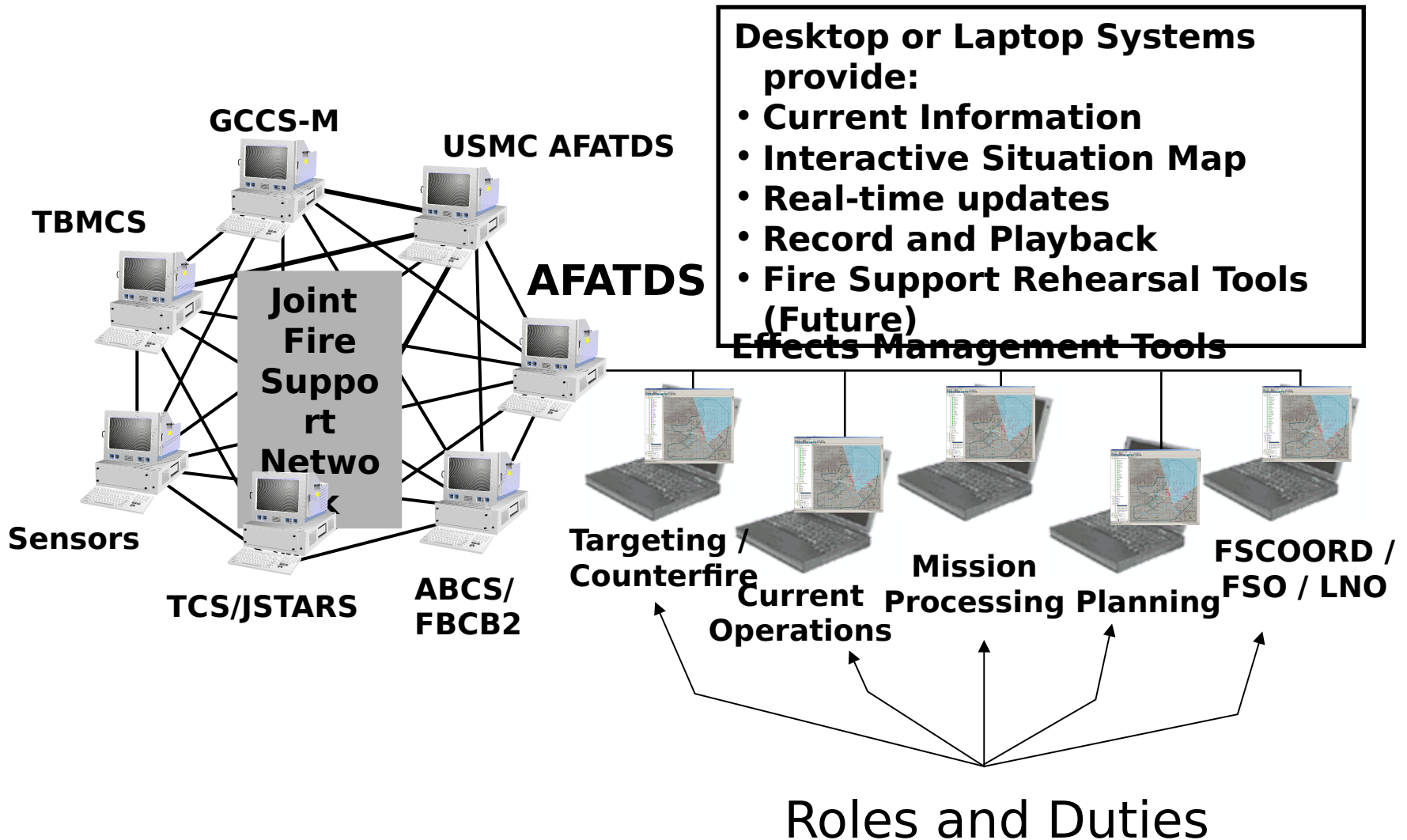


- **Windows 'Look and Feel'**
- **JMTK and/or C2PC Atlas map engine using NIMA maps**
- **Dynamic Navigation Tree**
- **Highly configurable display tailorable to specific roles/duties**
- **Enhanced user preferences allow defining & filtering map overlays, and changing display attributes (color, boldness, line widths) of entities on the map**
- **Interoperability with MS Office® Products, including import/export with Excel™**

- **Multiple Platform Access with AAS (up to 10 EMTs off of a single AAS, 4 of whom may be radio-connected FSCOORD Sync Tools)**
- **System Administrator enters into AAS user IDs and passwords for legitimate clients**
- **Ability at AAS to limit access of individual clients to specific AFATDS data and functions**



How Do EMTs “Fit in the Picture?”

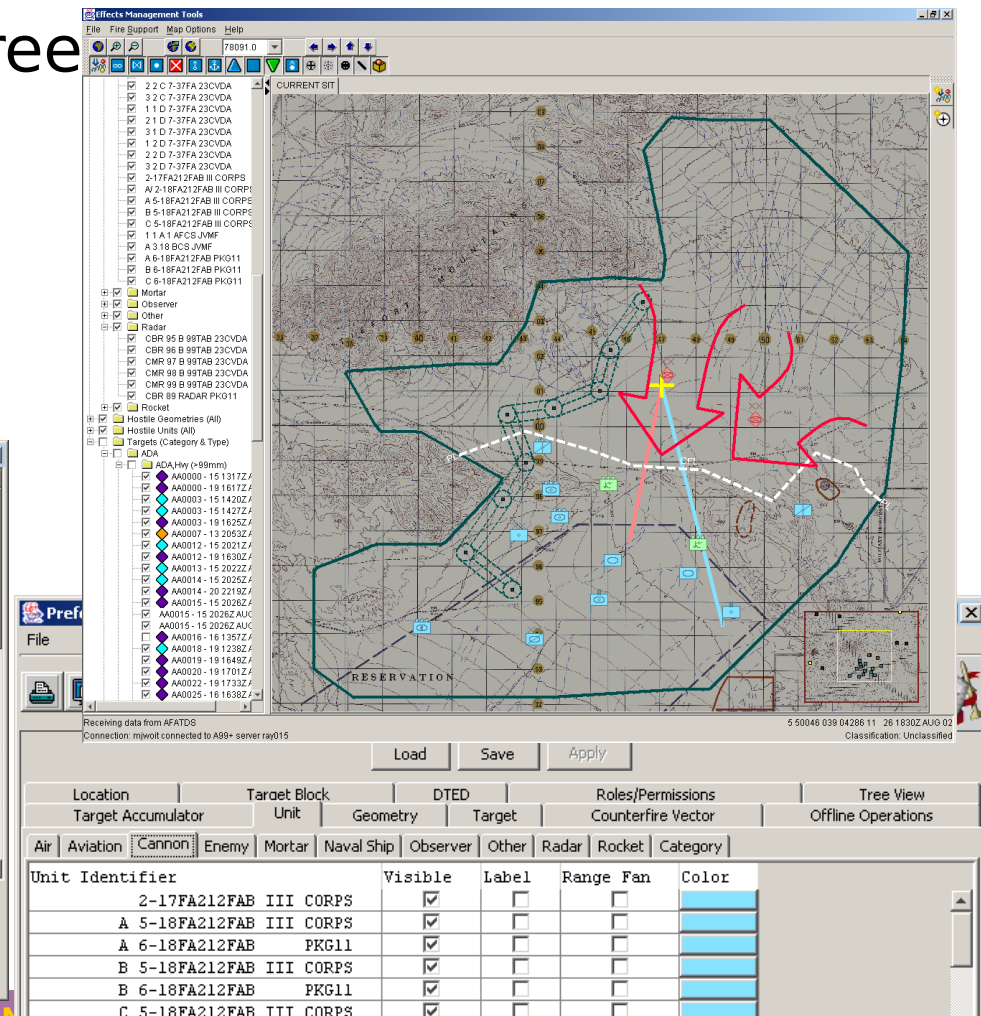
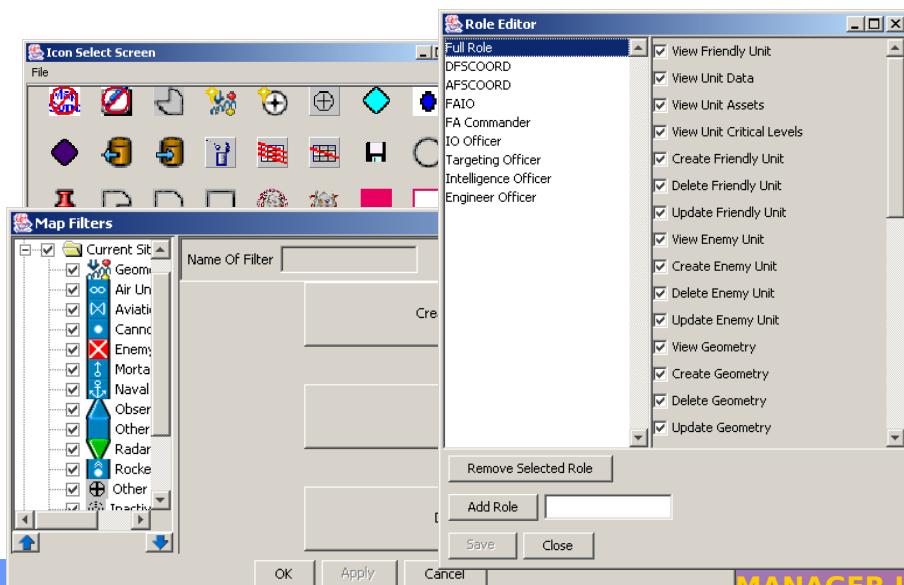




EMT Environment

EMTs are highly configurable to allow the User to control display attributes and the amount of information on the screen

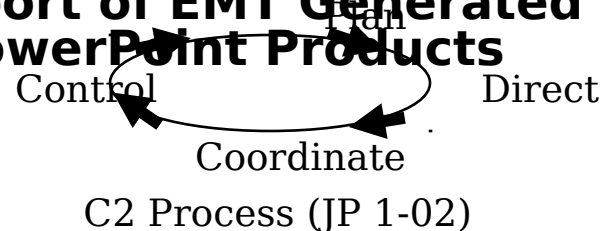
- Roles and Duties
- Windows-like behavior
 - Excel-like tables
 - User set Preferences
- Display Filters





EMT C2 Support

- **Plan**
 - Dynamic SA with Detailed Drill Down
 - View Land Component Commander's Guidance, HVT, HPT, TSS
 - Submit & Track Air Support Requests (TBMCS)
 - Kill Box & Auto J-SEAD Planning
- **Direct**
 - Initiate Calls For Fire (CFFs)
 - Create & Execute Named Target Lists & Battlefield Geometries
- **Coordinate**
 - Manipulation & Export of EMT Generated Spreadsheet & PowerPoint Products
- **Control**
 - Mission Reports





Comprehensive C2 Tool



Interface Options for Dynamic, Interactive C2

- Application Running on User's Platform
- Integrated into System of Record
- Tactical Access via SINCGARS



Laptop, PC, or
UNIX Application



C2PC Integration



FSCOORD
EMT
(Tactical)



EMT Targeting Support



Allows rapid coordination of the use of sensors, planning for attack, and execution of the delivery of fires and effects against enemy targets.

- NRT Sensor Data
- Target List Worksheets
- Named Target Lists
- Air Support Lists
- User Defined Target Types
- MIDB Access (V6.4)

The screenshot displays the EMT Targeting Support software interface. The main window is titled "Target Type Worksheet - UNCLASSIFIED" and shows a table of target types with columns for Target Type, AFATDS Mapping, Category, Min Range (m), Max Range (m), RAP Range (m), and Remarks. The table lists various target types such as 107mm MRL, 120mm Mortar, 2436, 2445, 2465, 2811, 2816, 251, 2512, 2519, 2523, 2525, 256, 257, 259, 2625-2 (MERCH), AA000, AA001, AA002, AA003, AA004, AA005, MW0010, MW0011, SB0000, and ZZ5554. The table is filtered to show 1 of 94 selected targets.

The "View Target MW0010 - UNCLASSIFIED" window is open, showing the target details for MW0010. The target is identified as "SA-8 (GECKO)" with a location of "11SNV5028503436". The target type is "SA-8 (GECKO)". The target is classified as "ADA, Light (<58mm)". The target is located at "11SNV5028503436". The target is classified as "ADA, Light (<58mm)". The target is located at "11SNV5028503436".

The "Target Data" form is also visible, showing the target's ID, plan, phase, and other details. The target is identified as "MW0010" with a plan of "Current Situation" and a phase of "Fire For Effect". The target is located at "11SNV5028503436". The target is classified as "ADA, Light (<58mm)". The target is located at "11SNV5028503436".



EMT Fire Support



- General Tools for common FSE type operations.
- Enables profound control of the AFATDS Network
- Create, Edit, Delete Geometries
 - View Guidance

AFATDS High Value Targets - Current Situation - UNCLASSIFIED

Category	Effects	Percent	When	Value
RSTA	Suppress	3	As Required	100
ADA	Neutralize	10	As Required	100
C3	Neutralize	10	As Required	100
Fire Support	Neutralize	10	As Required	100
Maneuver	Neutralize	10	As Required	100
LOC	Suppress	3	As Required	50
Lift	Suppress	3	As Required	50
Maintenance	Suppress	3	As Required	50
REC	Suppress	3	As Required	50
Engineer	Neutralize	10	As Required	50
Nuc Chemical	Neutralize	10	As Required	50
Ammunition	Destroy	30	As Required	50
POL	Destroy	30	As Required	50

Showing updated data...

Mission Status Screen - UNCLASSIFIED

Search Criteria

Filter By Location

Top Left Coordinate:

Bottom Right Coordinate:

Filter By Time Since:

Filter By Fire Units:

Filter By Mission Type:

Type Of Report:

Geometry - BIKELAKE - No Fire Area - UNCLASSIFIED

Tgt Num	Observer	Mat
AA0000	OPS 7-37FA 23CVDA	ADA,Hvy (
AA0001	OPS 7-37FA 23CVDA	ADA,Hvy (
AA0002	OPS 7-37FA 23CVDA	ADA,Hvy (
AA0003	OPS 7-37FA 23CVDA	ADA,Hvy (
AA0004	OPS 7-37FA 23CVDA	ADA,Hvy (
AA0005	OPS 7-37FA 23CVDA	ADA,Hvy (
AA0006	OPS 7-37FA 23CVDA	ADA,Hvy (
AA0007	OPS 7-37FA 23CVDA	ADA,Hvy (
AA0008	OPS 7-37FA 23CVDA	ADA,Hvy (
AA0009	OPS 7-37FA 23CVDA	ADA,Hvy (
AA0010	OPS 7-37FA 23CVDA	ADA,Hvy (
AA0011	OPS 7-37FA 23CVDA	ADA,Hvy (
AA0012	OPS 7-37FA 23CVDA	ADA,Hvy (
AA0013	OPS 7-37FA 23CVDA	ADA,Hvy (
AA0014	OPS 7-37FA 23CVDA	ADA,Hvy (
AA0015	OPS 7-37FA 23CVDA	ADA,Hvy (
AA0016	OPS 7-37FA 23CVDA	ADA,Hvy (
AA0017	OPS 7-37FA 23CVDA	ADA,Hvy (
AA0018	OPS 7-37FA 23CVDA	ADA,Hvy (
AA0019	OPS 7-37FA 23CVDA	ADA,Hvy (
AA0020	OPS 7-37FA 23CVDA	ADA,Hvy (
AA0021	OPS 7-37FA 23CVDA	ADA,Hvy (
AA0022	OPS 7-37FA 23CVDA	ADA,Hvy (
AA0023	OPS 7-37FA 23CVDA	ADA,Hvy (
AA0024	OPS 7-37FA 23CVDA	ADA,Hvy (
AA0025	OPS 7-37FA 23CVDA	ADA,Hvy (
AA0026	OPS 7-37FA 23CVDA	ADA,Hvy (
AA0027	OPS 7-37FA 23CVDA	ADA,Hvy (
AA0028	OPS 7-37FA 23CVDA	ADA,Hvy (
AA0029	OPS 7-37FA 23CVDA	ADA,Hvy (
AA0030	OPS 7-37FA 23CVDA	ADA,Hvy (
AA0031	OPS 7-37FA 23CVDA	ADA,Hvy (
AA0032	OPS 7-37FA 23CVDA	ADA,Hvy (

Mission Status Summary

State	Time Sensed	Status	Last Update
Active	13 2238Z AUG 02		01 0000Z JAN 70
Active	14 1901Z AUG 02		01 0000Z JAN 70
Active	15 1455Z AUG 02		01 0000Z JAN 70
Active	15 2300Z AUG 02		01 0000Z JAN 70
Active	13 2053Z AUG 02		01 0000Z JAN 70
Active	15 2311Z AUG 02		01 0000Z JAN 70
Active	26 2052Z AUG 02		26 2052Z AUG 02
Active	27 1837Z AUG 02		27 1837Z AUG 02
Active	27 1839Z AUG 02		27 1839Z AUG 02
Active	21 1837Z AUG 02		21 1837Z AUG 02
Active	21 1837Z AUG 02		21 1837Z AUG 02
Active	26 1846Z AUG 02		26 1846Z AUG 02
Active	13 1403Z AUG 02		01 0000Z JAN 70
Active	13 1412Z AUG 02		01 0000Z JAN 70

Target Info

Range (meters): 0

Azimuth (deg): 0

Strength: 0

FPE 1 Fuse: 0

FPE 1 Shell: 0

FPE 1 MyslRds: 0

FPE 2 Fuse: 0

FPE 2 Shell: 0

FPE 2 MyslRds: 0

Adjust Fuse: 0

Adjust Shell: 0

Adjust MyslRds: 0

- Mission Monitor
- Mission Fired Reports



EMT Air Support



Tools to extend the Air Support Functions resident in AFATDS to Platforms used by the Battle station

- Import/Export of Excel based ASRs/ASLs
- Visualization of targets, ASRs, ASLs, ATOs
- Geometry/FSCM management
- Drill down on screen icons

Target List Worksheet

Target List Worksheet - UNCLASSIFIED

File Target List

Active Inactive Planned On-Call Suspect ATF ARIZ ASL A ASL RATTLER ASL TEST
ASL TEST2 ASL ZULU CHARLIE HORSE CURRENT ACTIVE TARGET LIST DOG FACE TEST ASL 41D MAIN FSE

Start Time: 28 0600Z AUG 02 End Time: 29 0559Z AUG 02

ASR No.	Target	Target Type	Location	Msn Classification	Air Type	Air Msn State
AQDIG028	AA0021	AA, Troops and Armor	11SNV8753240806	Air Interdiction	AI: Air Interdiction	Unknown
AQDIG027	AA0026	AA, Mech Troops	11SNV0812707216	Air Interdiction	AI: Air Interdiction	Unknown
AQDIG026	AA0029	AA, Troops and Armor	11SNU3926373614	Air Interdiction	AI: Air Interdiction	Unknown
AQDIG029	AA0036	AA, Troops	11SNV8789630687	Air Interdiction	AI: Air Interdiction	Unknown
AQDIG035	DB4321	Terrain Feature	11SNV4285906649	Close Air Support	CAS: Close Air Support	Unknown
AQDIG001	F50002	Terrain Feature	11SNU4375596405	Close Air Support	CAS: Close Air Support	Unknown
AQDIG002	F50003	Terrain Feature	11SNU3996597488	Close Air Support	CAS: Close Air Support	Unknown
AQDIG003	F50004	Terrain Feature	11SNU3803294363	Close Air Support	CAS: Close Air Support	Unknown
AQDIG004	F50005	Terrain Feature	11SNU3809697542	Close Air Support	CAS: Close Air Support	Unknown
AQDIG005	F50006	Terrain Feature	11SNU5236993597	Close Air Support	CAS: Close Air Support	Unknown
AQDIG006	F50007	Terrain Feature	11SNU3715791071	Close Air Support	CAS: Close Air Support	Unknown
AQDIG007	F50008	Terrain Feature	11SNU4049690340	Close Air Support	CAS: Close Air Support	Unknown
AQDIG008	F50009	Terrain Feature	11SNU4617688971	Close Air Support	CAS: Close Air Support	Unknown
AQDIG009	F50010	Terrain Feature	11SNU4903989963	Close Air Support	CAS: Close Air Support	Unknown
AQDIG010	F50011	Terrain Feature	11SNU3622889515	Close Air Support	CAS: Close Air Support	Unknown

ASRs on ATO

Create List...

☒ Create ASL ☐ Create Target List

☒ Absolute Start: 29 0600Z SEP 02
☐ D-day End: 30 0559Z SEP 02

ATO Day AE

ASL 23CVD MAIN

Ok Cancel

ASL Window

Air Mission Information - UNCLASSIFIED

File

ASR No. Tgt Category Msn Class Start Time Enemy Unit ID
Tgt No. Tgt Type Msn Subclass End Time BE No
Tgt Location 11SNV5702104358 11

Priority: 1 Precedence: A

Rationale: Support Offensive Operations

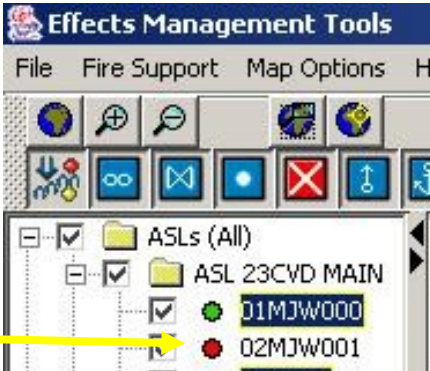
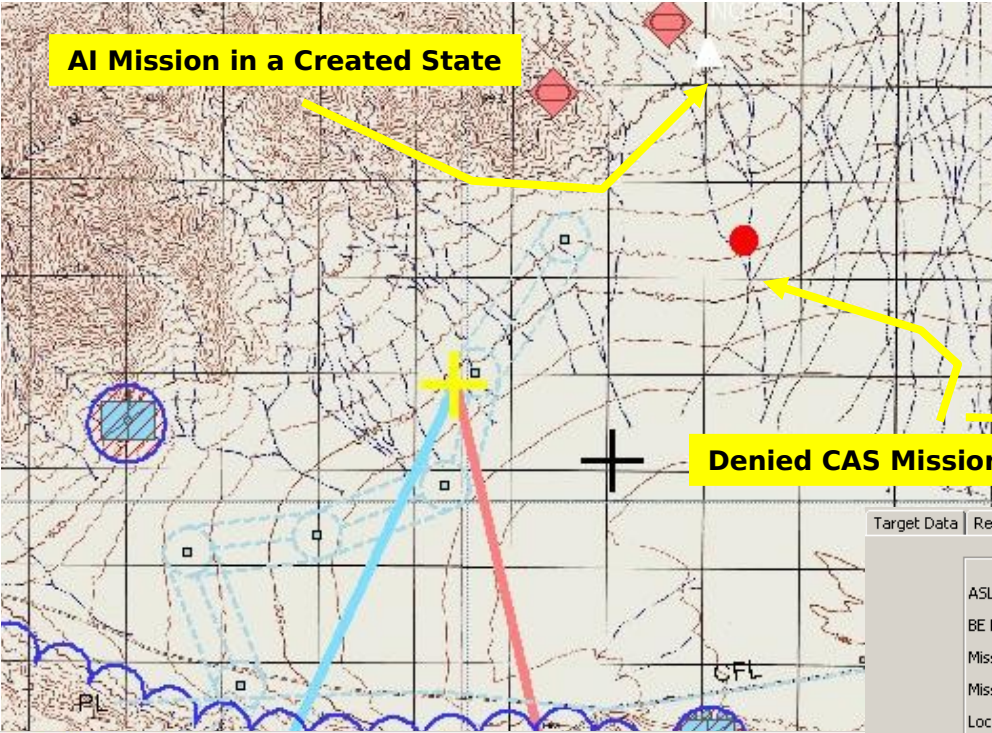
Desired Effects: Destroy all of the Armor

Status

Create ASR Window



EMT Air Support



Air Mission Information - UNCLASSIFIED

File

ASR No: [] Tgt Category: [] Msn Class: [] Start Time: [29 0600Z SEP 02] Er: []

Tgt No: [] Tgt Type: [] End Time: [30 0559Z SEP 02] BE: []

Tgt Location: [1 66021 000 00000]

Priority: [] Precedence: []

Rationale: []

Desired Effects: []

Status: []

Air Mission Classes

- Air Interdiction
- Airdrop
- Assault Support
- Close Air Support
- Electronic Warfare
- Medical Evacuation
- Reconnaissance

Target Data Requested Munitions More Target Data More Mission Data Basic Air Data

Air Target Data

ASL Name: ASL 23CVD MAIN ASR Number: NOTSET

BE Number: [] Air Mission State: []

Mission Kind: Air Interdiction Air Status: Created

Mission Class: AI: Air Interdiction

Location: 5 47983 039 05512 11 11

MIDB Enemy Unit ID: []

Target Type: Arty, Med SP (121-160mm)

Scheduling Data

ASR NET: 29 0600Z SEP 02 ASR NLT: 30 0559Z SEP 02

Reason For Nomination

Request Priority: 1

Precedence: A

Comments: []

Desired Effects: DLY FORCE HAVE NO LOSSES DUE TO INDIRECT FIRES.

Rationale: PCOMING DELIBERATE ATTACK AGAINST THE 11TH MRD



FSCOORD SYNCH TOOL



- **WHAT is the FSCOORD Synch Tool?**

- A user- friendly Fire Support Command and Control and near real time Situational Awareness tool
- Tailored for FSCOORD use, connected by Combat Net Radio (SINCGARS) to an AFATDS server.
- Designed to replace the FSCOORD's map board and digitally provide overlays (FSCMs, Fire Plans, targets, Position Areas, Maneuver graphics, Fire Support Execution Matrix, FA Support Plan, target lists, and unit status information).

- **WHY do you need it?**

- The FSCOORD is the single analog choke point in the digital FSCOORD chain.

System Concept

